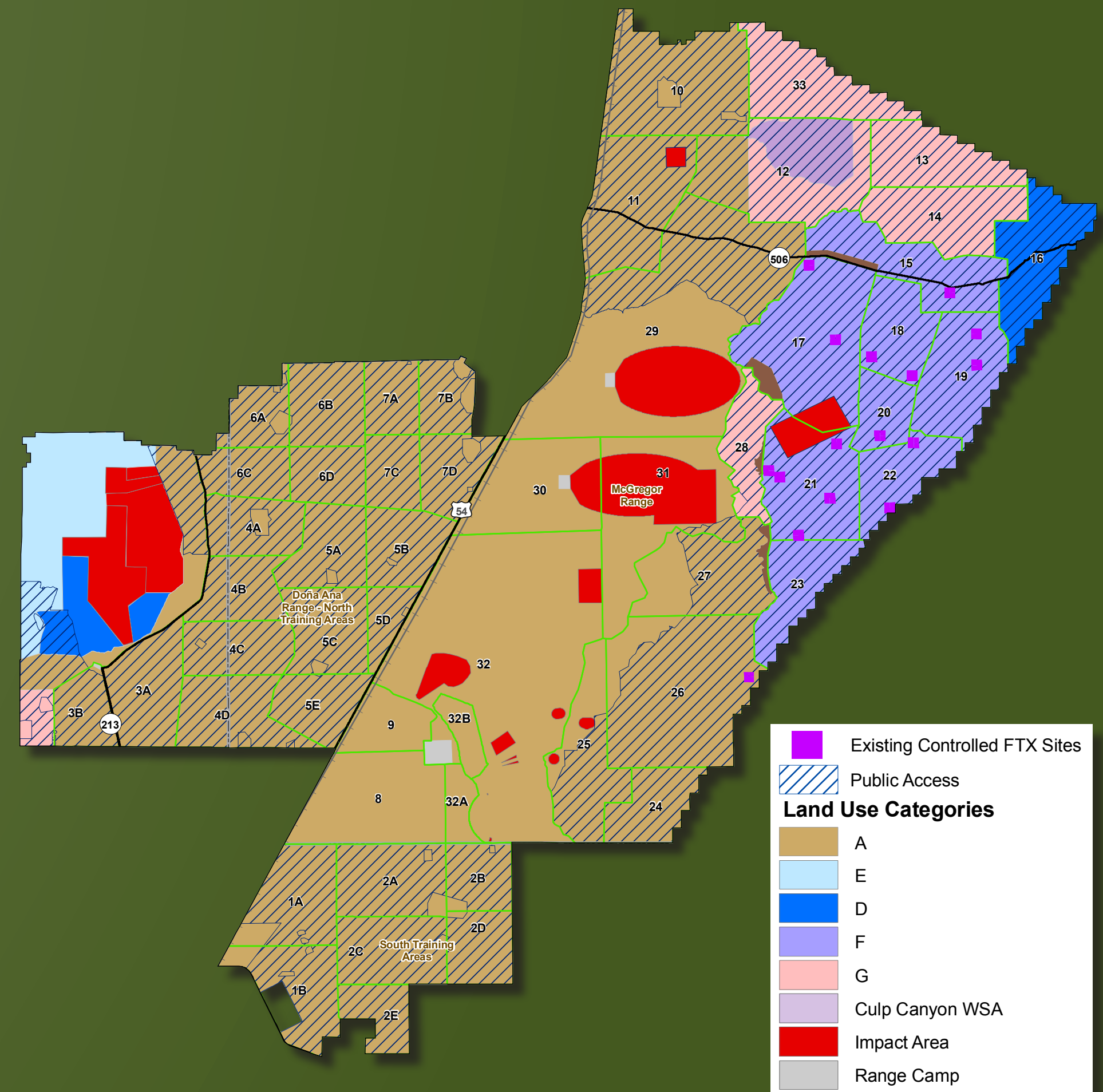


Land Use Changes

FBTC Land Use Category	Military Uses											
	Off-Road Vehicle Maneuver: Heavy	Off-Road Vehicle Maneuver: Light	On-Road Vehicle Maneuver	Dismounted Maneuver	Aircraft Operations	Controlled FTX	Mission Support Facilities	Live-Fire	SDZ / Safety Footprint	Surface Impact	Range Camps	Environmental Management
A	•	•	•	•	•	•	•	•	•	•	•	•
B	•	•	•	•	•	•	•	•	•	•	•	•
C	•	•	•	•	•	•	•	•	•	•	•	•
D	•	•	•	•	•	•	•	•	•	•	•	•
E	•	•	•	•	•	•	•	•	•	•	•	•
F	•	•	•	•	•	•	•	•	•	•	•	•
G	•	•	•	•	•	•	•	•	•	•	•	•
Wilderness Study Area												
Impact Areas												
Range Camps												

Land Use Alternative 1 (LU-1): NO ACTION ALTERNATIVE

- Military Land Use remains the same as in the 2007 Fort Bliss Supplemental EIS



Land Use Alternative 2 (LU-2): ALLOW FIXED SITES IN GRASSLAND AREAS BY REMOVING LIMITED USE AREAS IN PORTIONS OF SOUTHEAST MCGREGOR RANGE AND SACRAMENTO MOUNTAINS

- Allows 4 km² of fixed sites in Southeast McGregor Range within 1,000m of existing roads, and predominately on slopes of less than 30% (15 degrees)
- Allows fixed sites in Sacramento Mountains portion of Northeast McGregor Range North of Highway 506
- Fixed Sites are locations for bivouac, assembly, field headquarters or command sites, and limited digging (e.g., fighting positions)
- Affects approximately 1% of Southeast McGregor Range and approximately 31% of Northeast McGregor Range North of Highway 506
- Underlying maneuver use not affected by Fixed Site (ie., Northeast McGregor Range North of Highway 506 will still only allow dismounted and on-road vehicle maneuver under LU-2)

